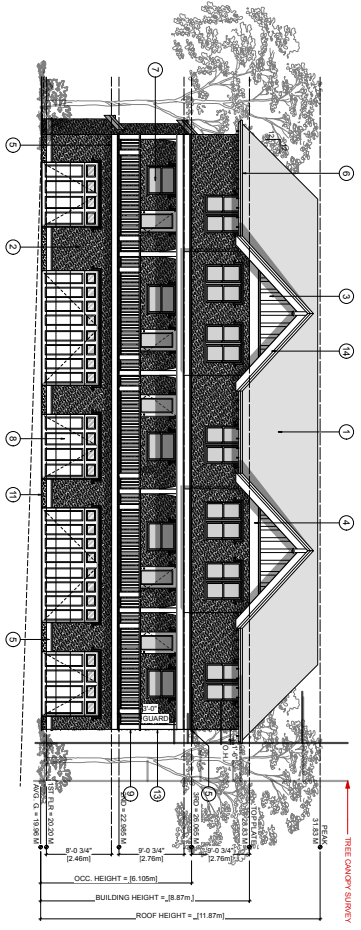
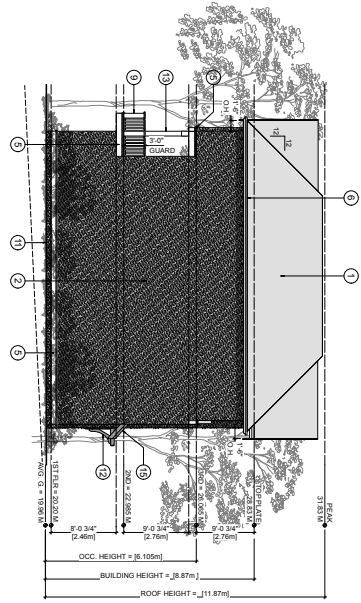


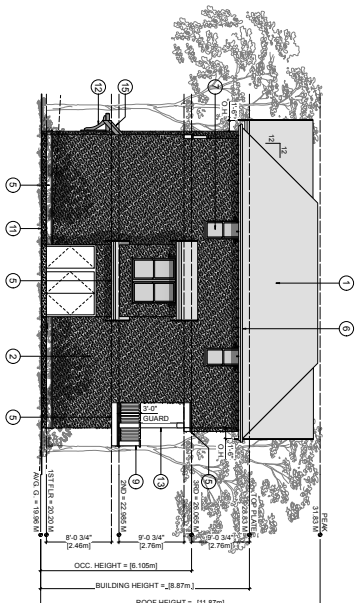
1 FRONT (S) ELEVATION  
Scale: 1/8" = 1'-0"



3 REAR (N) ELEVATION  
Scale: 1/8" = 1'-0"



2 SIDE (W) ELEVATION  
Scale: 1/8" = 1'-0"

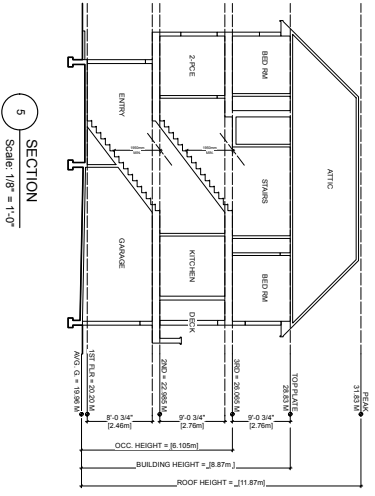


4 SIDE (E) ELEVATION  
Scale: 1/8" = 1'-0"

FINISH SCHEDULE & KEY	
1 ASPHALT/FIBERGLASS SHINGLE ROOFING	11 EXPOSED CONCRETE (MIN. 8" ABOVE GRADE)
2 STUCCO FINISH (PAINTED)	12 WOOD BRACKETS (PAINTED), DECORATIVE
3 NEW CEMENT BOARD PANELS (PAINTED)	13 WOOD POSTS (PAINTED)
4 CW 1X6 BATTONS (PAINTED) STYLED TO MATCH EXISTING HOUSE	14 18" WOOD FASCIA (PAINTED)
5 2X GABLE END BAND TO MATCH EXISTING HOUSE	15 CW ACCENTS AND FINIAL TO MATCH EXISTING HOUSE
6 FLASH CAPPED W/NERLINE	16 2X10 FASCIA (PAINTED) CW/ACCENT TRIM (PAINTED)
7 2X12 BAND (PAINTED) CW/ACCENT TRIM (PAINTED)	
8 PERIN. METAL GUTTER ON 2X6 FASCIA (PAINTED)	
9 WINDOW/DOOR CW/TRIM DETAIL (SEE 1914 MAJCLURE PLANS) FLASH OVER ALL DOOR/WINDOWS (TYP.)	
10 GARAGE DOOR, PREFINISHED	
11 WOOD GUARD RAIL (PAINTED) HEIGHT AS NOTED	
12 CONCRETE PATIO	

ALL COLOURS BY DESIGNER/OWNER

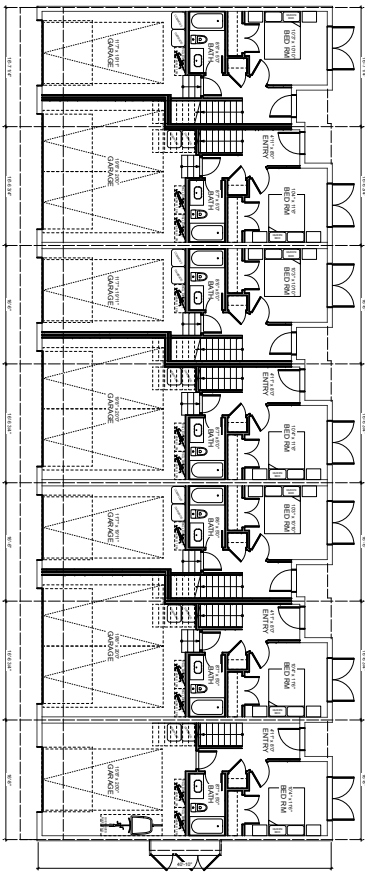
NOTES:  
 WINDOW OPERATIONAL/E. DIRECTION OF SWING; SHALL BE PER OWNER'S DIRECTION AND CONFIRM TO D.C.S.C. 2018 REQUIREMENTS FOR EGRESS.  
 FLASH OVER ALL MATERIAL TRANSITIONS, DOOR & WINDOW HEADS  
 NO COMBED-FACE TRIM



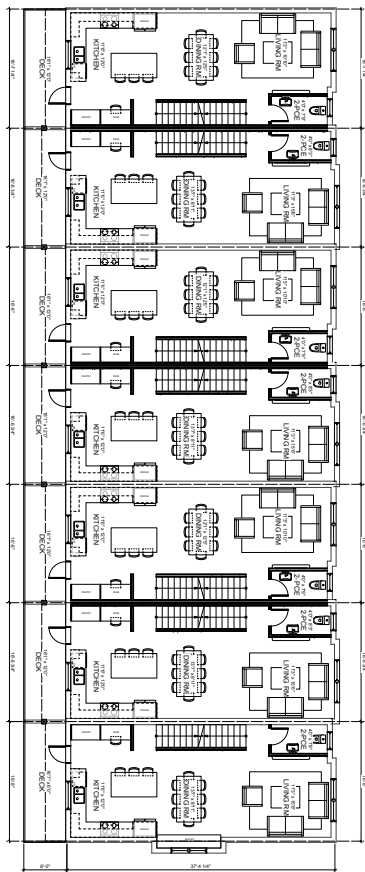
5 SECTION  
Scale: 1/8" = 1'-0"

ISSUED FOR DP  
2025.01.17

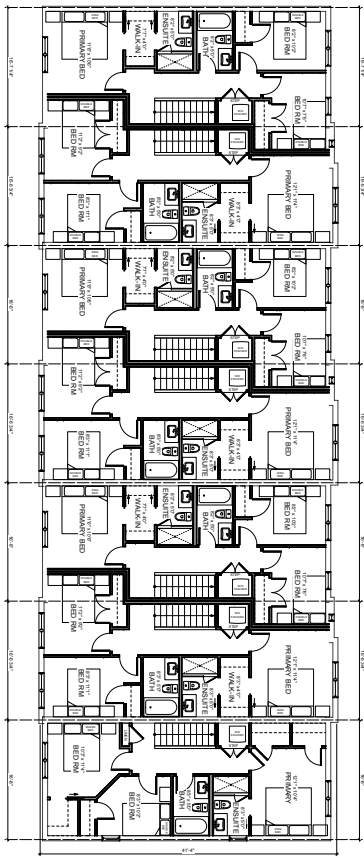
**KILO**  
**ZEBRADESIGN**  
 161 NEWPORT AVE  
 VANCOUVER, BC V6N 1C1  
 Phone: (250) 360-2144  
 Fax: (250) 360-2115  
 Drawn By: c.c.  
 Scale: AS NOTED  
 Project: 960 FOUL BAY ROAD  
 Title: TOWNHOUSE C - ELEVATIONS  
 Revision: Sheet  
 DP12  
 TOWNHOUSE



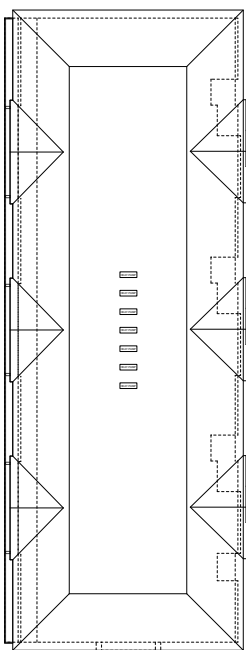
1 BUILDING D - 1ST FLOOR PLAN  
Scale: 1/8" = 1'-0"



2 BUILDING D - 2ND FLOOR PLAN  
Scale: 1/8" = 1'-0"



3 BUILDING D - 3RD FLOOR PLAN  
Scale: 1/8" = 1'-0"



4 BUILDING D - ROOF PLAN  
Scale: 3/32" = 1'-0"

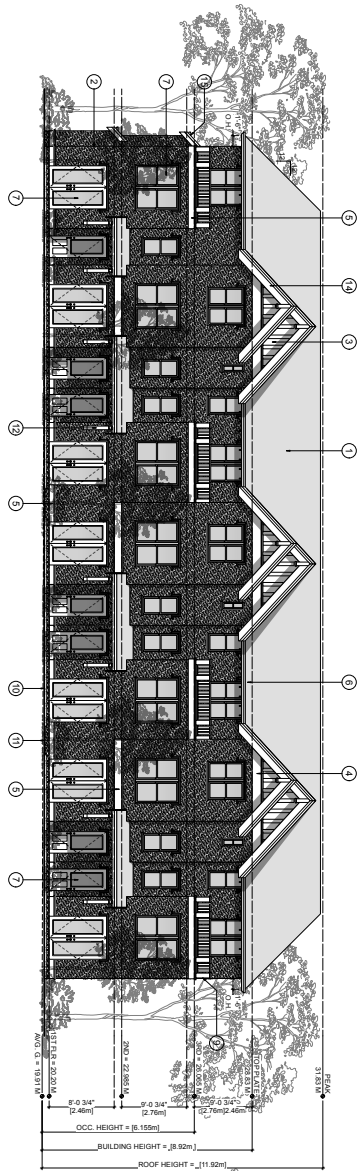
REV. NO.	DESCRIPTION	DATE
1	ADDED CHANGES	04.04.25

ISSUED FOR DP  
2025.01.17

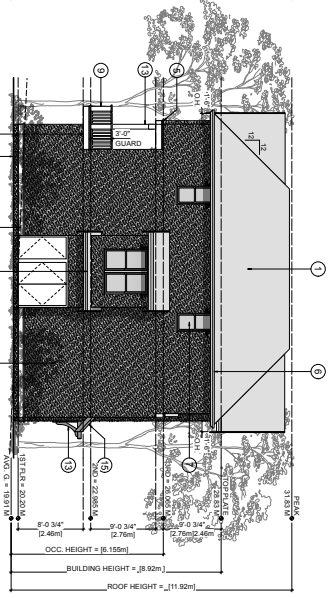
**ZEBRA DESIGN**  
161 NEWPORT AVE  
PHOENIX, AZ 85016  
Phone: (250) 380-2144  
Fax: (250) 380-2115  
Drawn By: C.C.

Scale: AS NOTED  
Project: 980 FOUL BAY ROAD  
Title: TOWNHOUSE D - FLOOR PLANS

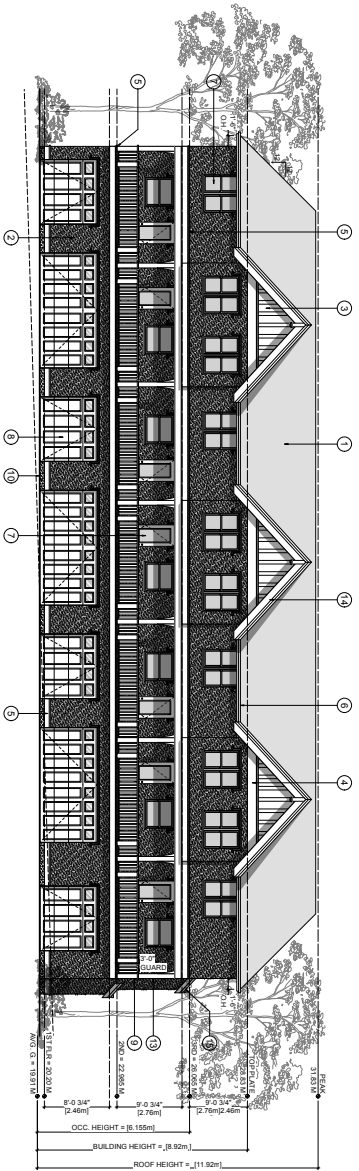
REVISION:	SHEET
	DP13
	TOWNHOUSE D - FLOOR PLANS



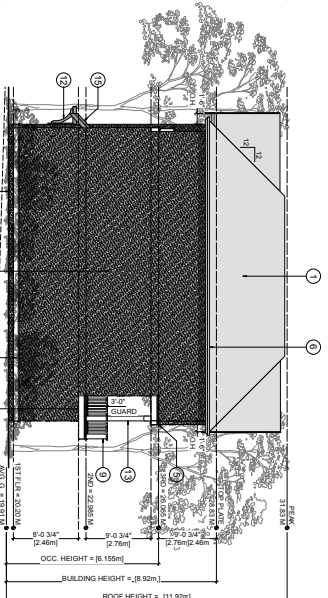
1 FRONT (N) ELEVATION  
Scale: 1/8" = 1'-0"



2 SIDE (E) ELEVATION  
Scale: 1/8" = 1'-0"



3 REAR (S) ELEVATION  
Scale: 1/8" = 1'-0"



4 SIDE (W) ELEVATION  
Scale: 1/8" = 1'-0"

FINISH SCHEDULE & KEY	
1 ASPHALT/FIBERGLASS SHINGLE ROOFING	11 EXPOSED CONCRETE (MIN. 8" ABOVE GRADE)
2 STUCCO FINISH (PAINTED)	12 WOOD BRACKETS (PAINTED), DECORATIVE
3 NEW CEMENT BOARD PANELS (PAINTED)	13 WOOD POSTS (PAINTED)
4 2X 1X6 BATTENS (PAINTED) STYLED TO MATCH EXISTING HOUSE	14 18" WOOD FASCIA (PAINTED)
5 2X GABLE END BAND TO MATCH EXISTING HOUSE	15 CW/ACCENTS AND FINIAL TO MATCH EXISTING HOUSE
6 FLASH PAINTED WAINSCOTE	16 2X10 FASCIA (PAINTED)
7 2X12 BAND (PAINTED)	17 CW/ACCENT TRIM (PAINTED)
8 PREFIN. METAL GUTTER ON CW/ACCENT TRIM (PAINTED)	
9 2X6 FASCIA (PAINTED)	
10 WINDOW DOOR CW/TRIM DETAIL (SEE 1914 MAJCLURE PLANS) FLASH OVER ALL DOOR/WINDOWS (TYP.)	
11 GARAGE DOOR, PREFINISHED	
12 WOOD GUARD RAIL (PAINTED) HEIGHT AS NOTED	
13 CONCRETE PATIO	

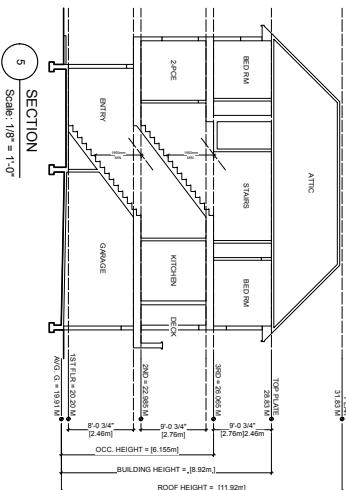
ALL COLOURS BY DESIGNER/OWNER

NOTES:

WINDOW OPERATIONAL EJECTION OF SWING; SHALL BE PER OWNER'S PREFERENCE AND CONFIRM TO D.C.S.C. 2018 REQUIREMENTS FOR EGRESS.

FLASH OVER ALL MATERIAL TRANSITIONS, DOOR & WINDOW HEADS

NO COMBED-FACE TRIM



5 SECTION  
Scale: 1/8" = 1'-0"

ISSUED FOR DP  
2025.01.17

**KILO**  
**ZEBRA DESIGN**  
167 NEWPORT AVE  
SUITE 100  
VANCOUVER, BC V6N 1K1  
Phone: (250) 360-2144  
Fax: (250) 360-2115  
Drawn By: C.C.  
Scale: AS NOTED

Project:  
980 FOUU BAY ROAD  
Title:  
TOWNHOUSE D -  
ELEVATIONS

Revision:	Sheet:
DP14	199
Proj No: 188	