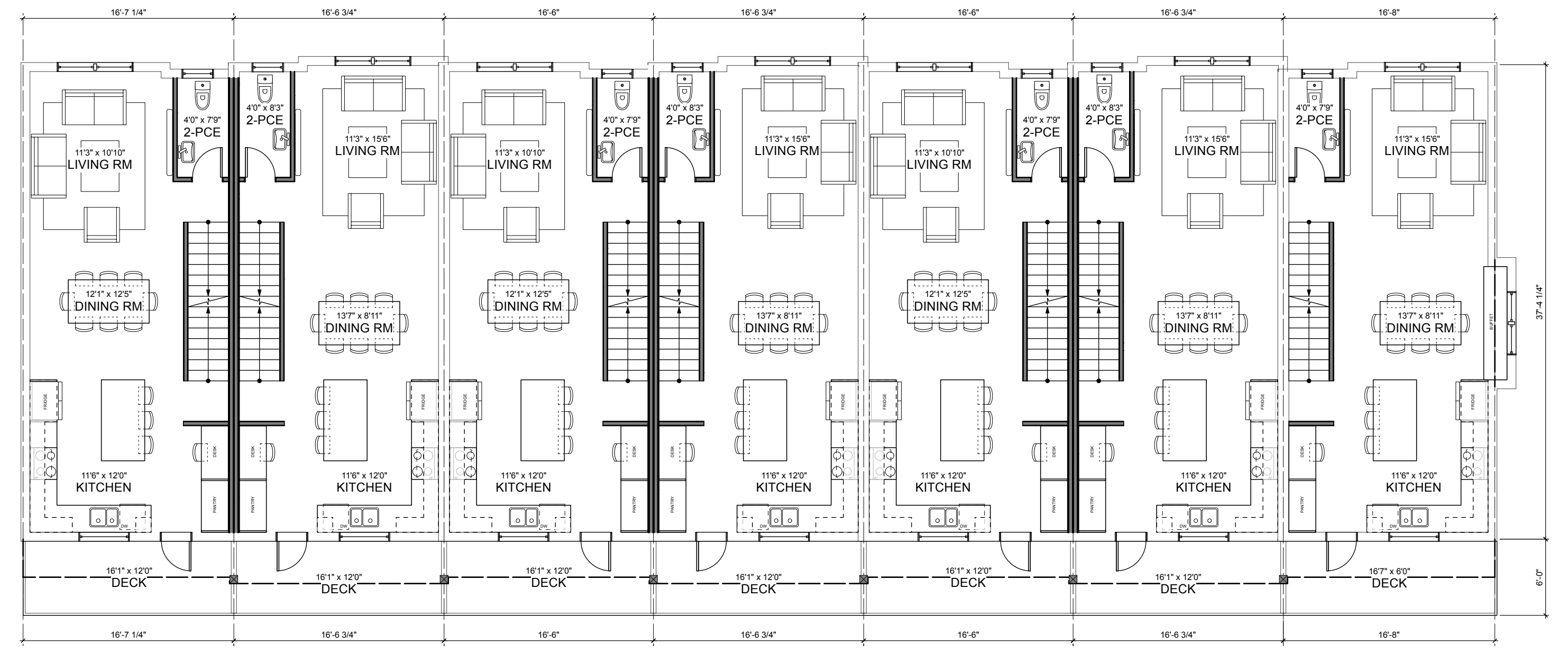
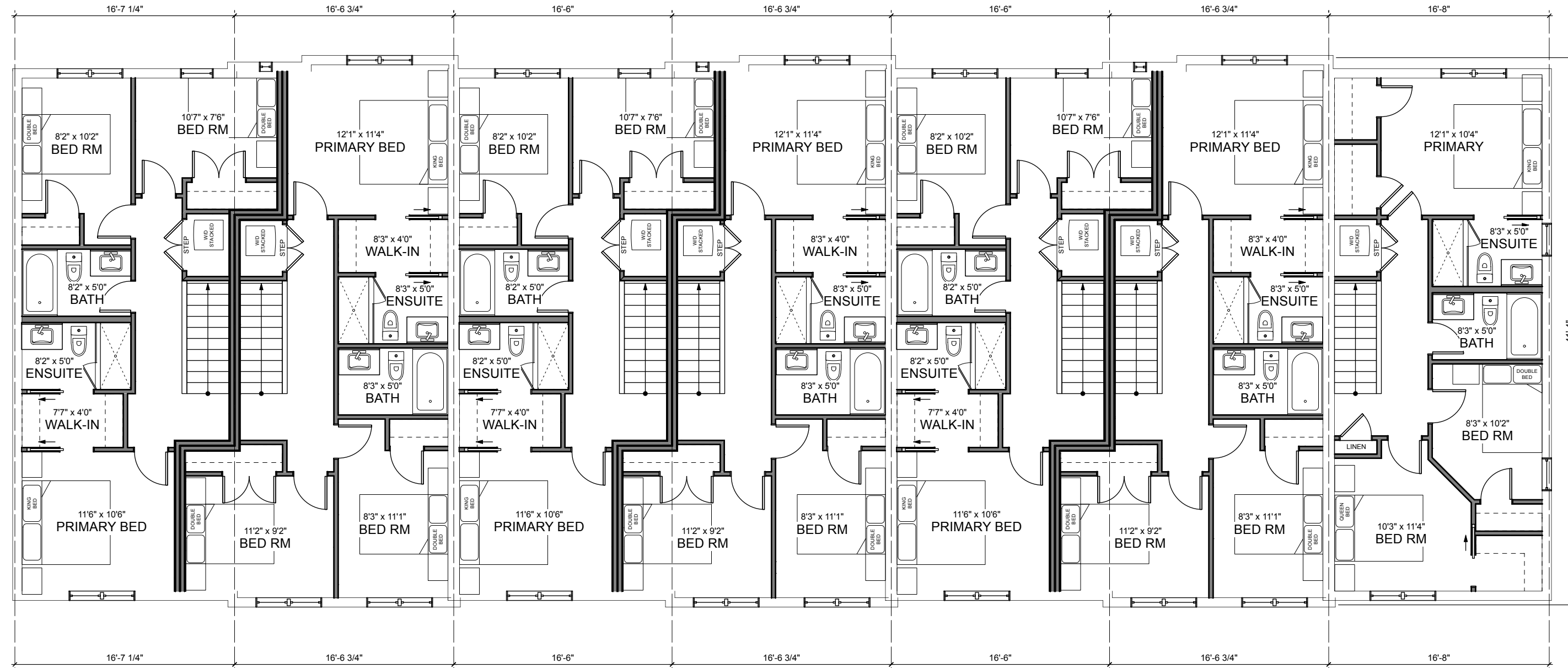


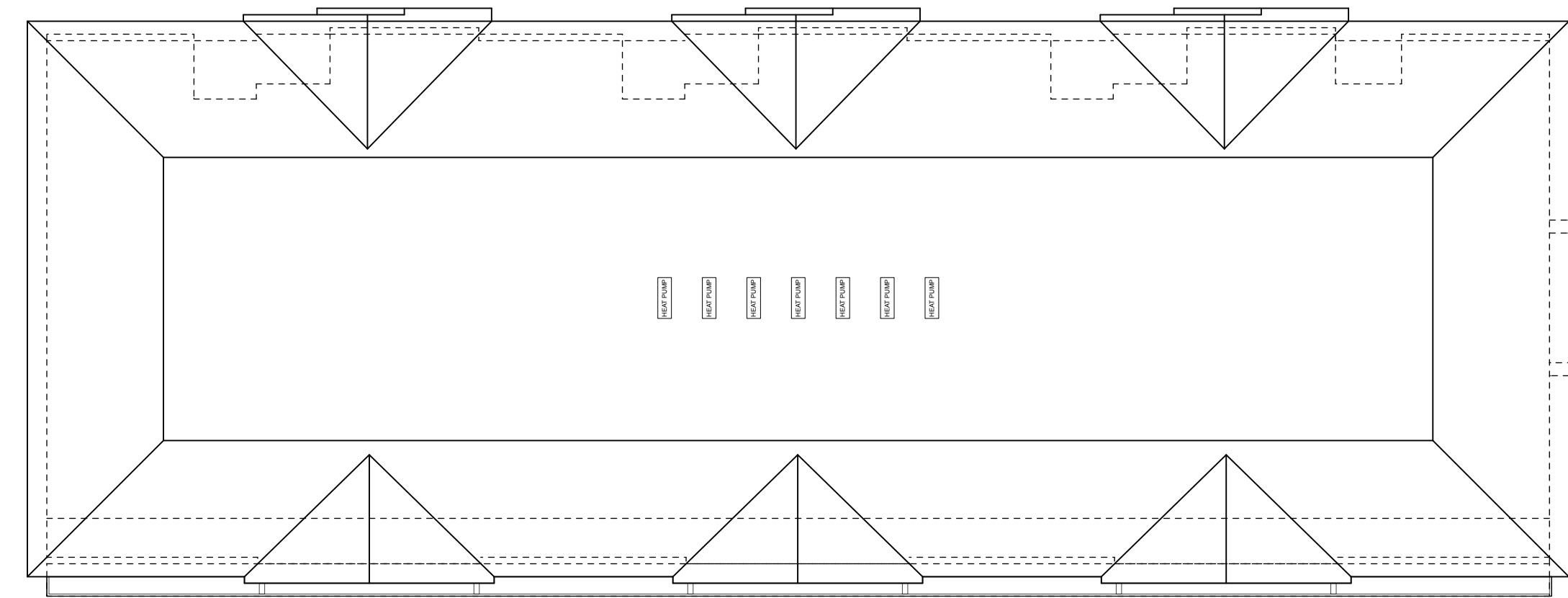
1 BUILDING D - 1ST FLOOR PLAN
Scale: 1/8" = 1'-0"



2 BUILDING D - 2ND FLOOR PLAN
Scale: 1/8" = 1'-0"



3 BUILDING D - 3RD FLOOR PLAN
Scale: 1/8" = 1'-0"



4 BUILDING D - ROOF PLAN
Scale: 3/32" = 1'-0"

ISSUED FOR DP
2025.01.17



1161 NEWPORT AVE
Victoria, B.C. V8S 5E6
Phone: (250) 360-2144
Fax: (250) 360-2115

Drawn By: c.c.

Scale: AS NOTED

Project:
960 FOUL BAY ROAD

Title:
TOWNHOUSE D -
FLOOR PLANS

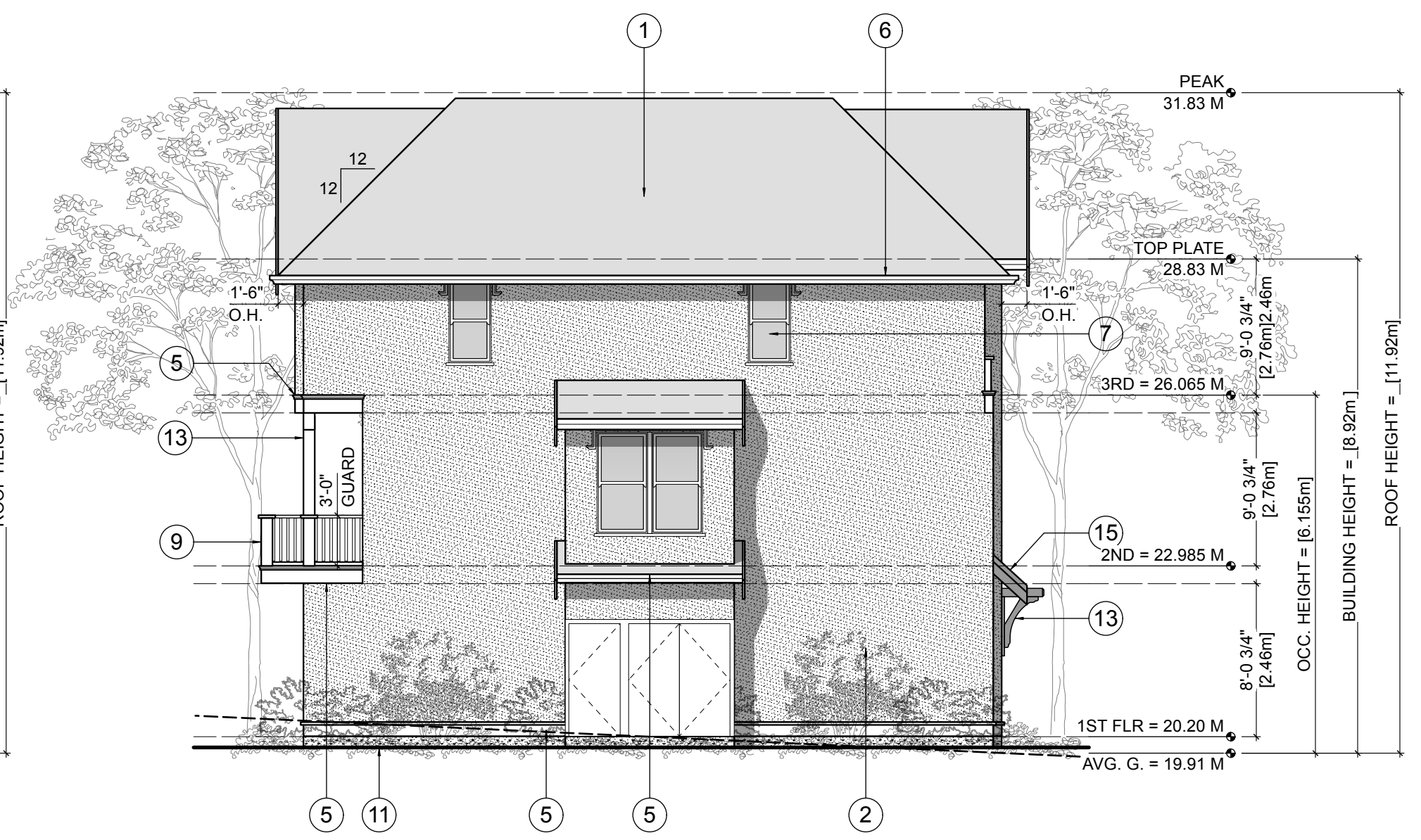
Revision: Sheet:

REV. NO.	DESCRIPTION	DATE
1	- NO CHANGES	04.04.25.

DP13
Proj.No. TBD



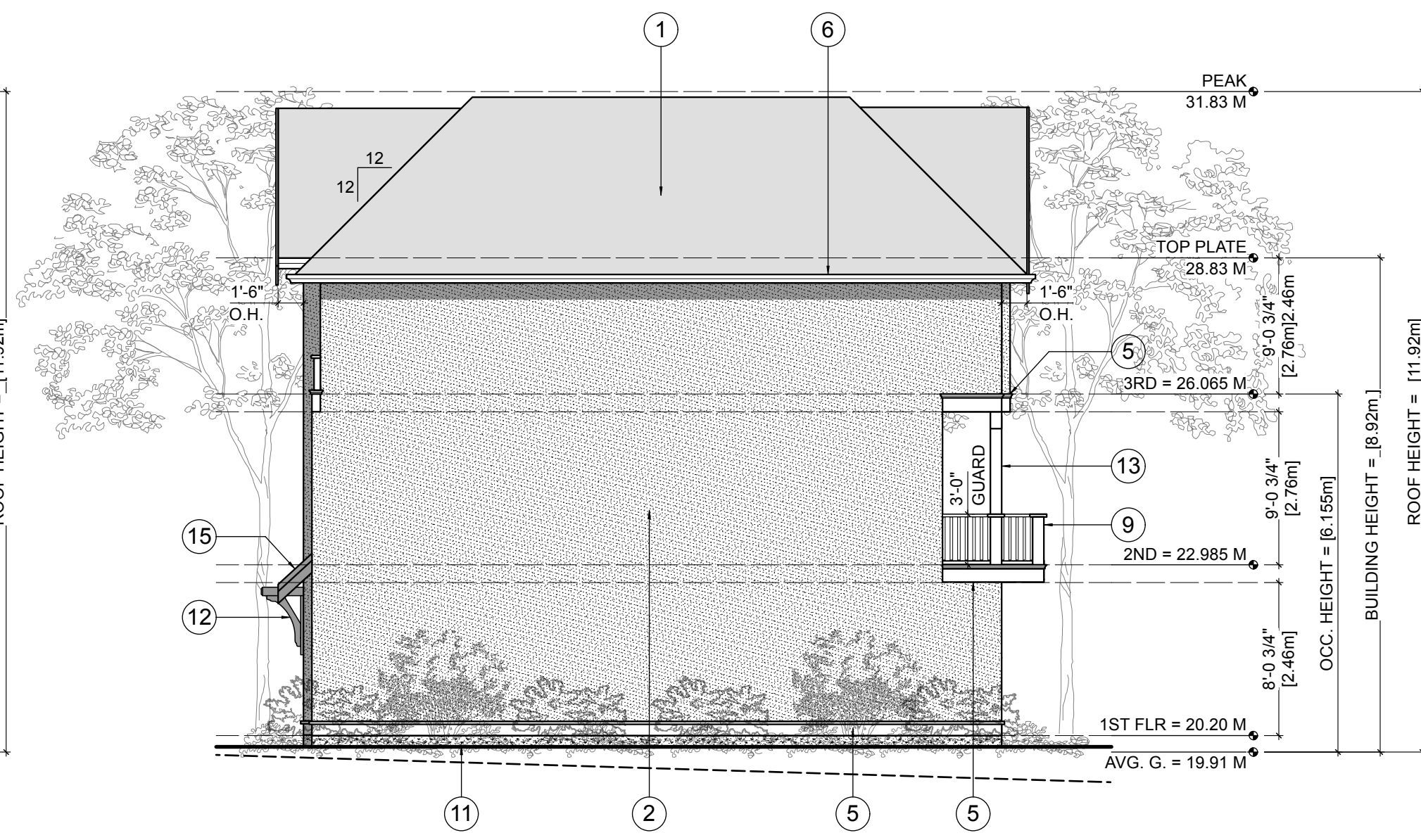
1 FRONT (N) ELEVATION
Scale: 1/8" = 1'-0"



2 SIDE (E) ELEVATION
Scale: 1/8" = 1'-0"



3 REAR (S) ELEVATION
Scale: 1/8" = 1'-0"



4 SIDE (W) ELEVATION
Scale: 1/8" = 1'-0"

FINISH SCHEDULE KEY

- | | |
|---|--|
| <ul style="list-style-type: none"> 1 ASPHALT/FIBERGLASS SHINGLE ROOFING 2 STUCCO FINISH (PAINTED) 3 NEW CEMENT BOARD PANELS (PAINTED)
C/W 1X6 BATONS (PAINTED)
STYLED TO MATCH EXISTING HOUSE 4 2X GABLE END BAND TO MATCH EXISTING HOUSE
C/W CANTED WATERLINE
FLASH OVER 5 2X12 BAND (PAINTED)
C/W ACCENT TRIM (PAINTED) 6 PREFIN. METAL GUTTER ON
2X6 FASCIA (PAINTED) 7 WINDOW/DOOR
C/W TRIM DETAIL (SEE 1914 MACLURE PLANS)
FLASH OVER ALL DOOR/WINDOWS (TYP.) 8 GARAGE DOOR, PREFINISHED 9 WOOD GUARD RAIL (PAINTED)
HEIGHT AS NOTED 10 CONCRETE PATIO | <ul style="list-style-type: none"> 11 EXPOSED CONCRETE (MIN 8" ABOVE GRADE) 12 WOOD BRACKETS (PAINTED), DECORATIVE 13 WOOD POSTS (PAINTED) 14 16" WOOD FASCIA (PAINTED)
C/W ACCENTS AND FINIAL TO MATCH EXISTING
HOUSE 15 2X10 FASCIA (PAINTED)
C/W ACCENT TRIM (PAINTED) |
|---|--|

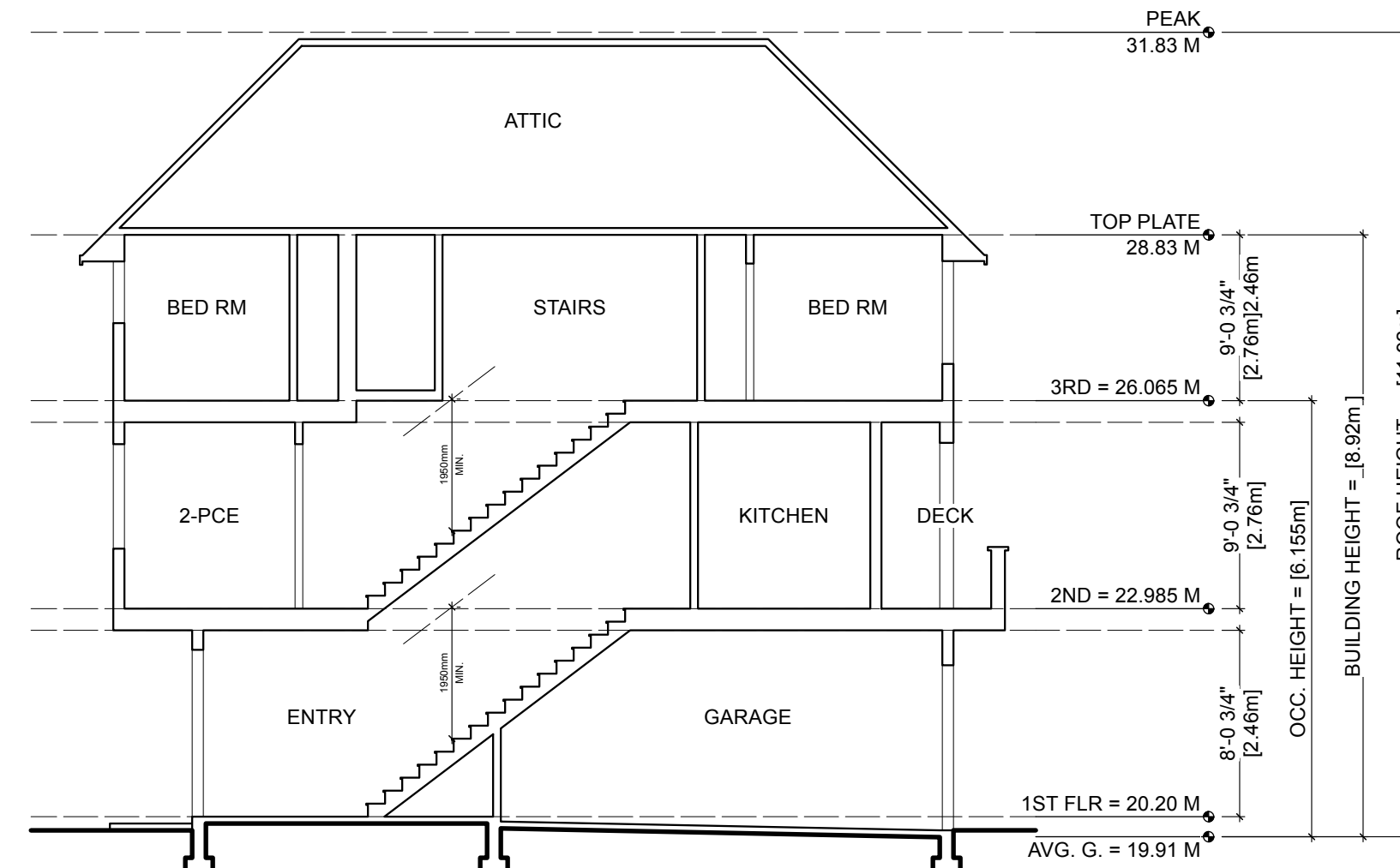
NOTES:

WINDOW OPERATION (I.E. DIRECTION OF SWING) SHALL BE PER OWNER'S DIRECTION AND CONFORM TO B.C.B.C. 2018 REQUIREMENTS FOR EGRESS.

FLASH OVER ALL MATERIAL TRANSITIONS, DOOR & WINDOW HEADS

NO COMBED-FACE TRIM

ALL COLOURS BY DESIGNER/OWNER



5 SECTION
Scale: 1/8" = 1'-0"

ISSUED FOR DP
2025.01.17

KILO
ARCHITECTURE
ZEBRADESIGN

1161 NEWPORT AVE
Victoria, B.C. V8S 5E6
Phone: (250) 360-2144
Fax: (250) 360-2115

Drawn By: c.c.

Scale: AS NOTED

Project:
960 FOUL BAY ROAD

Title:
TOWNHOUSE D -
ELEVATIONS

Revision: Sheet:

DP14
Proj.No. TBD