

Seal

## Surface Materials

- Cast in Place Saw Cut Broom Finished Concrete Paving as per City of Vancouver Engineering Standard 100mm thick
- Unit Concrete Pavers - Pedestrian Holland Paver as manufactured by Mutual Materials Size: 3 15/16" x 7 3/8" x 2 3/8" thick (pedestrian) Colour: Natural Grey Pattern: Staggered Running Bond
- Unit Concrete Pavers - Camous Spine/Fire Truck Access Holland Paver as manufactured by Mutual Materials Size: 3 15/16" x 7 3/8" x 3 1/8" thick (vehicular) Colour: Natural Grey Pattern: Staggered Running Bond
- Unit Concrete Pavers - Camous Spine/Fire Truck Access Holland Paver as manufactured by Mutual Materials Size: 3 15/16" x 7 3/8" x 3 1/8" thick (vehicular) Colour: Charcoal Pattern: Staggered Running Bond
- Cast in Place Broom Finished Vehicular Concrete Paving - broom finished, 1.5m x 1.5m saw cut pattern, 150mm thick c/w Rebar
- Poured in Place Rubber Surfacing - 50mm depth custom colour mixes TBD, c/w Aliphatic Binder by Landufe, supplied by Marathon Surfaces
- 608 x 608 x 44mm Precast Concrete Paving Slabs Vancouver Slabs, natural colour manufactured by Mutual Materials
- Structural Grass Invisible Structures 2
- Sawn Basalt Pavers 300 - 600mm Ø x 50mm thick Sandblast Finish - top surface only
- Artificial Turf on 75mm Rubber Surfacing as supplied by Marathon Surfaces
- River Rock Drain Strip c/w Permaloc Aluminum Edger 12"/300mm wide
- Sodded Sand Based Lawn on 12"/300mm growing medium
- Shrub and Groundcover Planting on min. 20"/500mm growing medium depth - see plant list this sheet
- Structural Soil

## Grading + Drainage

- + BS 10.00m bottom of stair
- + TS 10.00m top of stair
- + BW 10.00m bottom of wall
- + TW 10.00m top of wall
- + TC 10.00m top of curb
- + BC 10.00m bottom of curb
- + BB 10.00m top of bank
- + TB 10.00m bottom of bank
- + BG 10.00m building grade
- + FG 10.00m finished grade
- + FFE 10.00m finished floor elevation
- direction/percent slope
- - - break in slope
- direction/number of risers down
- existing elevation (as per survey)
- Drain Type 1 - Area Drain - see detail model no. FD-2340 Floor Drain as fabricated by Zum
- Drain Type 2 - Slot Drain model no. Brickslot as fabricated by Aco Drain
- Manhole - refer to Civil Drawings
- Soil Barring at Tree Rootball
- Subsurface 150mm Ø Perforated Drain Pipe c/w cleanout

## Site Furniture

- Stainless Steel Bike Rack model Ring - embedded finish: Stainless Steel supplier: Landscape Forms www.landscapeforms.com - refer to detail
- Custom Wood Bench - various lengths - Thermally Modified Ash on Powdercoated Aluminum Frame
- Powdercoated Aluminum Bar Height Counter - c/w Concrete Footings
- Fixed Traffic Bollard cast in 400mm wide x 710mm deep CIP Concrete Band model no. Series 29 Basic Bollard BB29-P1 Supplier: Frances Andrew http://www.francesandrew.com/?product=basic-bollard-series-29 Colour: TBD Mounting: Concrete Embed
- Removable Traffic Bollard cast in 400mm wide x 710mm deep CIP Concrete Band model no. Series 29 Basic Bollard BB29-R1 Supplier: Frances Andrew http://www.francesandrew.com/?product=basic-bollard-series-29 Colour: TBD Mounting: Concrete Embed
- Precast Concrete Smudging Basin
- Urban Agriculture Cedar Planter Box - refer to details
- 2.4m long section of vertical 450mm deep Root Barrier as manufactured by Deeproot model UB 18-2

## Loose Furniture

- Dining Chair with Arms by Landscape Forms
- Bar Stool by Landscape Forms
- Lounge Table by Landscape Forms
- Cafe Table by Landscape Forms
- Eco Lounge Chair colour: Black by Case supplied by Case Furniture www.casefurniture.com
- Fixed Metal Picnic Table Marina Picnic Table - 715cm long (4 legs) x 170cm width, 6 profiles colour: Off White RAL 9002 manufactured by Extremis www.extremis.com mount to pavers with L Bracket as supplied by Extremis
- Kitchen Counter Marina High Table - 475cm long (3 legs) x 87cm width colour: Off White RAL 9002 manufactured by Extremis www.extremis.com mount to pavers with L Bracket as supplied by Extremis
- Fixed Cafe Picnic Table Picnic colour: Off White RAL 9002 manufactured by Extremis www.extremis.com mount to pavers with L Bracket as supplied by Extremis
- Hammock Headdemock Deluxe Hammock with Stand colour: Red manufactured by Fatboy www.fatboycanada.com

## Landscape Fencing + Metalwork

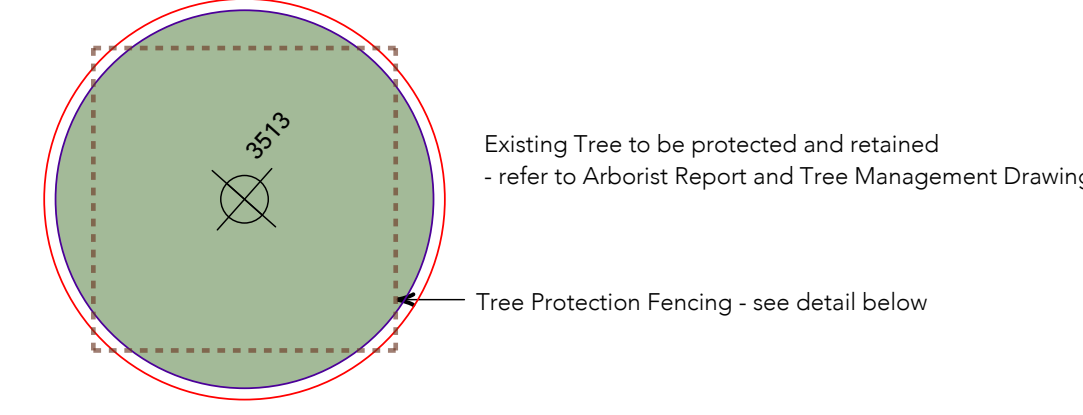
- Powdercoated Aluminum Handrail to BCBC
- Stretching Bar at Gym Patio Powdercoated Aluminum Pipe 75mm/3" Ø
- 1.8m Ht. Powdercoated Aluminum Fence c/w Key FOB Access

## Plant List

key	qty.	Botanical Name	Common Name	Size	Spacing
<b>Trees</b>					
AC	3	Acer circinatum	Vine Maple	B&B, 6cm caliper, shrub form	
AR	7	Acer rubrum 'Bowhall'	Fastigate Red Maple	B&B, 7cm caliper, 1.8m ht. Std.	
CX	13	Cornus 'Starlight'	Starlight Dogwood	B&B, 6cm caliper, shrub form	
QG	18	Quercus garryana	Garry Oak	B&B, 7cm caliper	
QG	7	Quercus palustris	Pin Oak	B&B, 7cm caliper, 1.8m ht. Std.	
PO	6	Picea omorika 'Braun'	Sarban Spruce	B&B, 3m ht.	
ST1	12	Street Tree 1 - Foul Bay	Street Tree 1 - Foul Bay Parks	B&B, 7cm caliper, 1.8m ht. Std.	
<b>Shrubs</b>					
		Cornus s. 'Keleyii'	Dwarf Redtwig Dogwood	#2 pot	0.6m o.c.
		Daphne x 'Carol Mackie'	Rock Daphne	#5 pot	0.9m o.c.
		Erica carnea - white *	White Heather	#1 pot	0.3m o.c.
		Forthrightia sp. 'Blue Mist'	Coastal Forthrightia	#5 pot	0.9m o.c.
		Lonicera pileata	Boxleaf Honeyuckle	#3 pot	1m o.c.
		Mahonia nanosa	Oregon Grape	#1 pot	0.4m o.c.
		Philadelphus x 'Miniature Snowflake'	Dwarf Mock Orange	#3 pot	0.75m o.c.
		Rhododendron 'Alena'	White Rhododendron	#5 pot	0.75m o.c.
		Rhododendron macrophyllum	Pacific Rhododendron	#1 pot	1.5m o.c.
		Rosa 'Nearly Wild'	Pink Rose	#3 pot	0.8 o.c.
		Rubus parviflorus * ♂	Thimbleberry	#3 pot	1.2m o.c.
		Rubus spectabilis * ♂	Salmonberry	#3 pot	1.2m o.c.
		Spiraea betulifolia	Birchleaf Spirea	#3 pot	0.75m o.c.
		Symphoricarpos albus	Snowberry	#3 pot	1m o.c.
		Symphoricarpos mollis	Trailing Snowberry	#3 pot	1m o.c.
		Vaccinium ovalifolm	Blueberry	#5 pot	0.75m o.c.
		Vaccinium ovatum 'Thunderbird'	Evergreen Blueberry	#5 pot	0.9m o.c.
		Vaccinium parviflorum * ♂	Huckleberry	#5 pot	1m o.c.
		Vaccinium x 'Northcountry' * ♂	Dwarf Blueberry	#5 pot	0.5m o.c.
<b>Edible Planting</b>					
		Herb Mix - sage, thyme, mint, oregano, cilantro, rosemary*		10cm pot	0.30m o.c.
		Temp. Urban Agriculture Planting - strawberry, blueberry, raspberry*		#1 pot	0.40m o.c.
<b>Grasses, Groundcovers + Ferns</b>					
		Achlya triphylla	Vanilla Leaf	10cm pot	0.4m o.c.
		Acrostaphylos uva-ursi	Kinkinnock	#1 pot	0.4m o.c.
		Acorum caudatum	Wild Ginger	10cm pot	0.3m o.c.
		Blechnum spicant	Deer Fern	#1 pot	0.35m o.c.
		Carex 'Everest' ♂	Everest Sedge	10cm pot	0.35m o.c.
		Cornus canadensis	Bunchberry	10cm pot	0.3m o.c.
		Cotoneaster dammeri	Cotoneaster	#1 pot	0.5m o.c.
		Dicentra formosa	Bleeding Heart	#1 pot	0.4m o.c.
		Fragaria chiloensis	Coastal Strawberry	#1 pot	0.35m o.c.
		Fragaria vesca	Woodland Strawberry	10cm pot	0.3m o.c.
		Galium odoratum	Sweet Bedstraw	10cm pot	0.3m o.c.
		Gaultheria shallon* ♂	Salal	#1 pot	0.4m o.c.
		Gaultheria procumbens ♂	Wintergreen	10cm pot	0.3m o.c.
		Geranium viscosissimum *	Sticky Geranium	#1 pot	0.35m o.c.
		Geum triflorum	Praina Smoke	#1 pot	0.35m o.c.
		Hypericum 'Sweet Lion'	Hybrid St. John's Wort	#1 pot	0.4m o.c.
		Iris tenax	Oregon Iris	#1 pot	0.35m o.c.
		Ibatis sempervirens *	Evergreen Candytuft	#1 pot	0.35m o.c.
		Mahonia repens	Creeping Oregon Grape	#1 pot	0.3m o.c.
		Malanathemum dilatatum	False Lily of the Valley	10cm pot	0.3m o.c.
		Malanathemum stellata	Star Flowered Solomon's Seal	10cm pot	0.4m o.c.
		Penstemon fruticosus *	Bush Penstemon	#1 pot	0.4m o.c.
		Sedum oregonum	Oregon Stonecrop	10cm pot	0.25m o.c.
		Sedum spathulifolium	Broad-leaved Stonecrop	10cm pot	0.25m o.c.
		Polystichum munium	Western Sword Fern	#3 pot	0.6m o.c.
		Trillium ovatum	Western Trillium	bulb	0.3m o.c.
		Vaccinium vitis-idaea	Lingonberry	10cm pot	0.3m o.c.
		Viola praemorsva	Yellow Montane	10cm pot	0.3m o.c.
		Viola sempervirens	Trailing Yellow Violet	10cm pot	0.3m o.c.

- General Planting Notes:**
- All work shall meet or exceed the requirements as outlined in the Current Edition of the B.C. Landscape Standard.
  - Plant sizes and related container classes are specified according to the B.C. Landscape Standard Current Edition. For container classes #3 and smaller, plant sizes shall be as shown in the plant list and the Standard, for all other plants, both plant size and container class shall be as shown in the plant list. Specifically, when the plant list call for B.C. class containers these shall be as defined in the BCNFA (ANSI) Standard.
  - All soft landscape area are to be irrigated using a high efficiency drip system, complete with rain sensor. All work to IAABC standards. Refer to specification section 32.84.00.
  - All plants with an asterisk (\*) are bee friendly species.
  - All plants with an asterisk (B) are bird friendly species.
  - Any plant substitutions adjacent to the children's play area are required to be non toxic.
  - Mulch and growing medium in childcare not to contain mushroom manure.

## Existing Trees



## Irrigation + Hose Bibs

- Frost Free Hose Bib - refer to Mechanical Drawings
- Stubout/Point of Connection: Refer to Mechanical Dwgs
- Rain Sensor - located on rooftop of Level 28

## Landscape Drawing List

- L0.1 Legends + Notes
- L1.0 Landscape Site Plan
- Landscape Materials Plans
  - L1.1 South
  - L1.2 North
- Landscape Grading + Drainage Plans
  - L2.1 South
  - L2.2 North
- Landscape Tree Planting Plans
  - L3.0 Canopy Coverage
  - L3.1 South
  - L3.2 North
- Landscape Sections
  - L6.1 Landscape Sections

## Landscape Lighting + Electrical

- Catenary Lighting
- Duplex Receptacle - refer to Electrical Drawings

no.	date	item
3	2025.08.22	reissued for Rezoning
2	2025.07.23	issued for DD 50%
1	2025.05.09	issued for SD
-	2025.05.01	issued for Rezoning

Copyright Reserved  
This drawing is and shall remain the property of Groundswell Landscape Architecture Inc. and shall retain the copyright therein. This document shall not be used for additions or alterations to the project or for the purpose of any other project without the prior written consent of Groundswell Landscape Architecture Inc.

Project  
**Camosun College  
Student Residences  
Oak Bay BC**

Project No. 25-01 Drawn js  
Scale 1:100 Reviewed js

Drawing Title  
**Landscape Legends**

Sheet No.

L0.1



no.	date	item
3	2025.08.22	reissued for Rezoning
2	2025.07.23	issued for DD 50%
1	2025.05.09	issued for SD
-	2025.05.01	issued for Rezoning

Revisions

Copyright Reserved  
This drawing is and shall remain the property of Groundswell Landscape Architecture Inc. and shall retain the copyright therein. This document shall not be used for additions or alterations to the project or for the purpose of any other project without the prior written consent of Groundswell Landscape Architecture Inc.

Project

Camosun College  
Student Residences  
Oak Bay BC

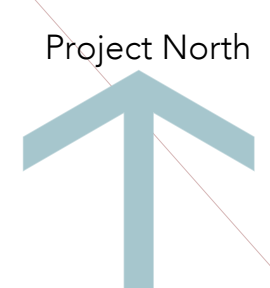
Project No. 25-01 Drawn js  
Scale 1:200 Reviewed js

Drawing Title

Landscape Site Plan

Sheet No.

L1.0



Seal

no.	date	item
3	2025.08.22	reissued for Rezoning
2	2025.07.23	issued for DD 50%
1	2025.05.09	issued for SD
-	2025.05.01	issued for Rezoning

Revisions

Copyright Reserved

This drawing is and shall remain the property of Groundswell Landscape Architecture Inc. and shall retain the copyright therein. This document shall not be used for additions or alterations to the project or for the purpose of any other project without the prior written consent of Groundswell Landscape Architecture Inc.

Project

Camosun College  
Student Residences  
Oak Bay BC

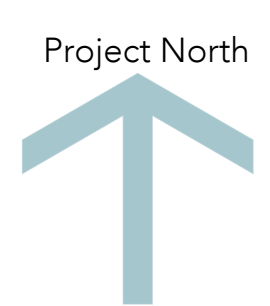
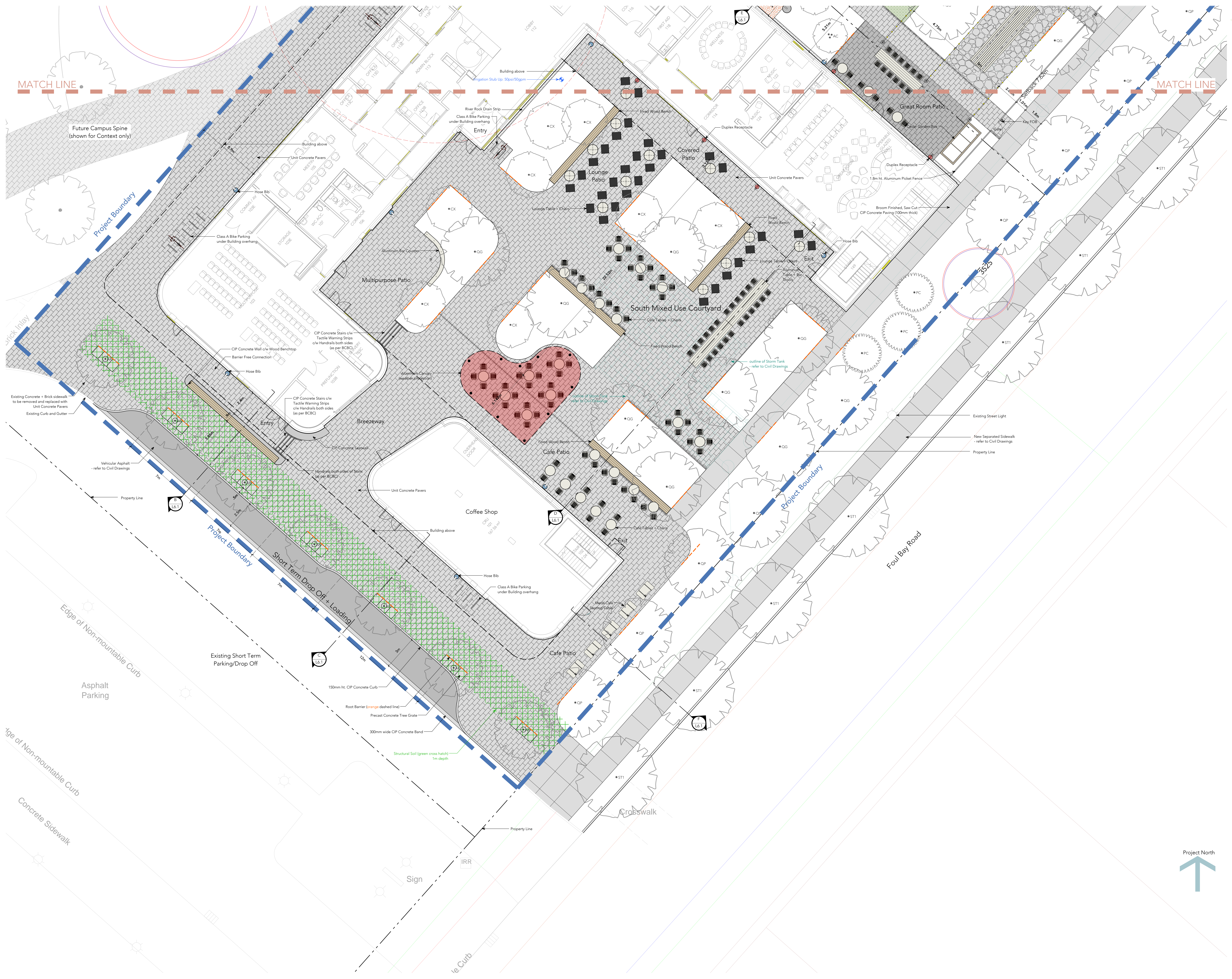
Project No. 25-01 Drawn js  
Scale 1:100 Reviewed js

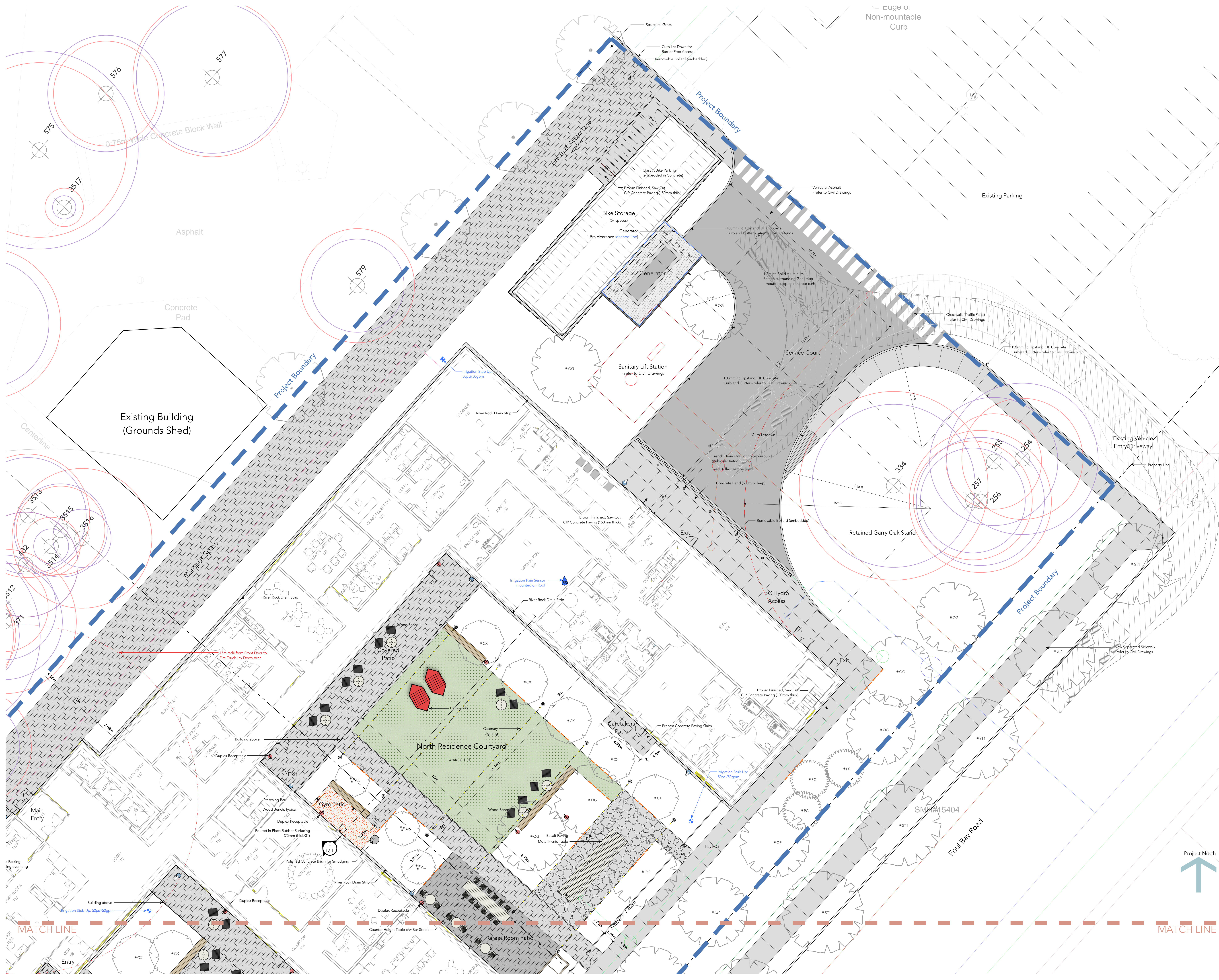
Drawing Title

Landscape Concept Plan  
- South

Sheet No.

L1.1





Revisions

3	2025.08.22	reissued for Rezoning
2	2025.07.23	issued for DD 50%
1	2025.05.09	issued for SD
-	2025.05.01	issued for Rezoning
no.	date	item

Copyright Reserved  
This drawing is and shall remain the property of Groundswell Landscape Architecture Inc. and shall retain the copyright therein. This document shall not be used for additions or alterations to the project or for the purpose of any other project without the prior written consent of Groundswell Landscape Architecture Inc.

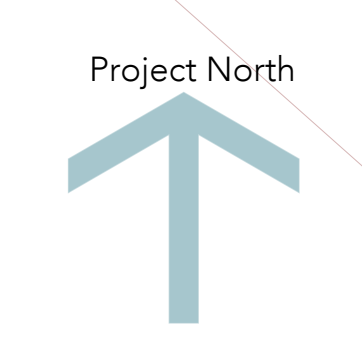
Project  
**Camosun College  
Student Residences  
Oak Bay BC**

Project No. 25-01      Drawn js  
Scale 1:100            Reviewed js

Drawing Title  
**Landscape Concept Plan  
- North**

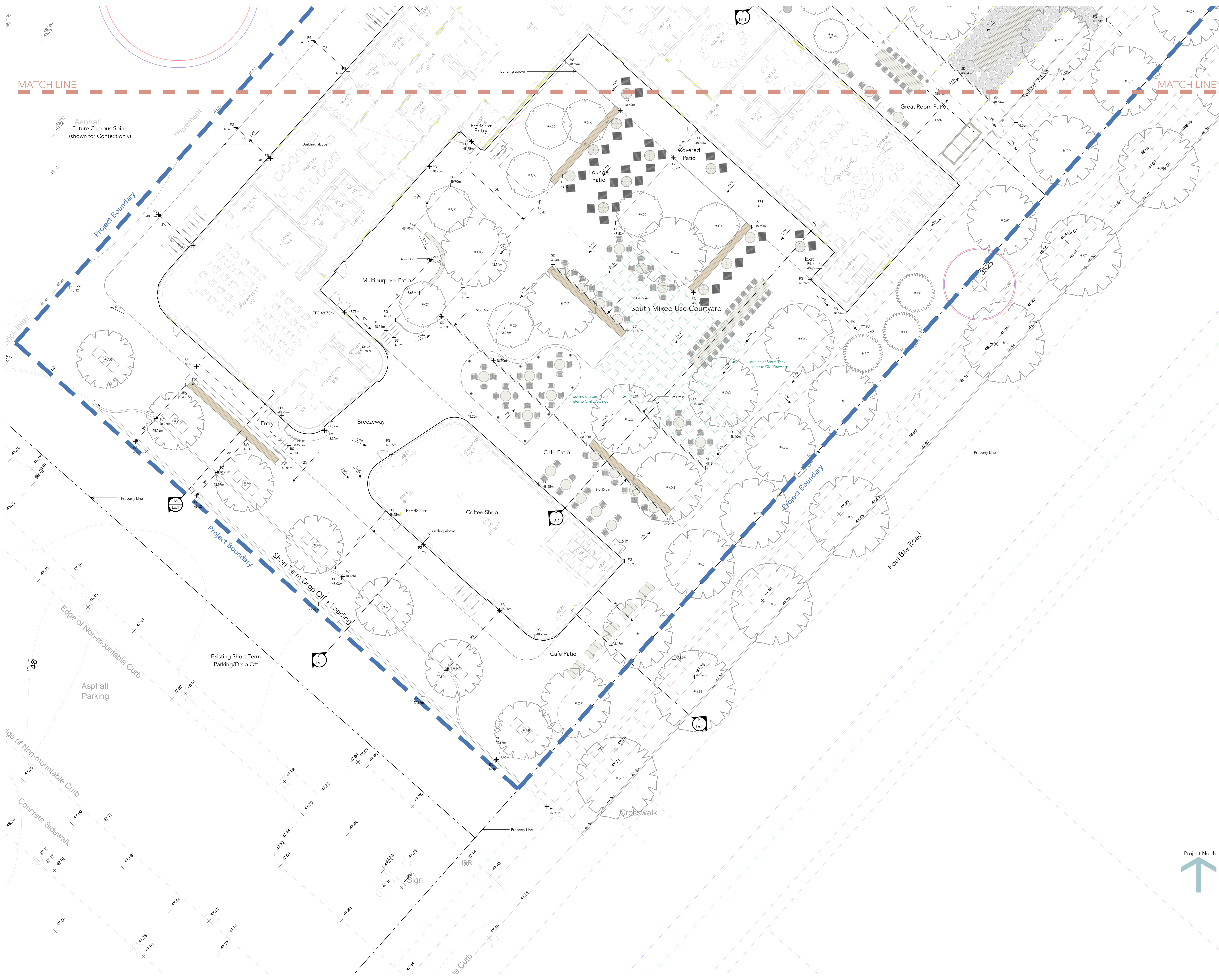
Sheet No.

**L1.2**



MATCH LINE

Seal



no.	date	item
3	2025.08.22	reissued for Rezoning
2	2025.07.23	issued for DD 50%
1	2025.05.09	issued for SD
-	2025.05.01	issued for Rezoning

Copyright Reserved  
This drawing is and shall remain the property of Groundswell Landscape Architecture Inc. and shall retain the copyright therein. This document shall not be used for additions or alterations to the project or for the purpose of any other project without the prior written consent of Groundswell Landscape Architecture Inc.

Project  
**Camosun College  
Student Residences  
Oak Bay BC**

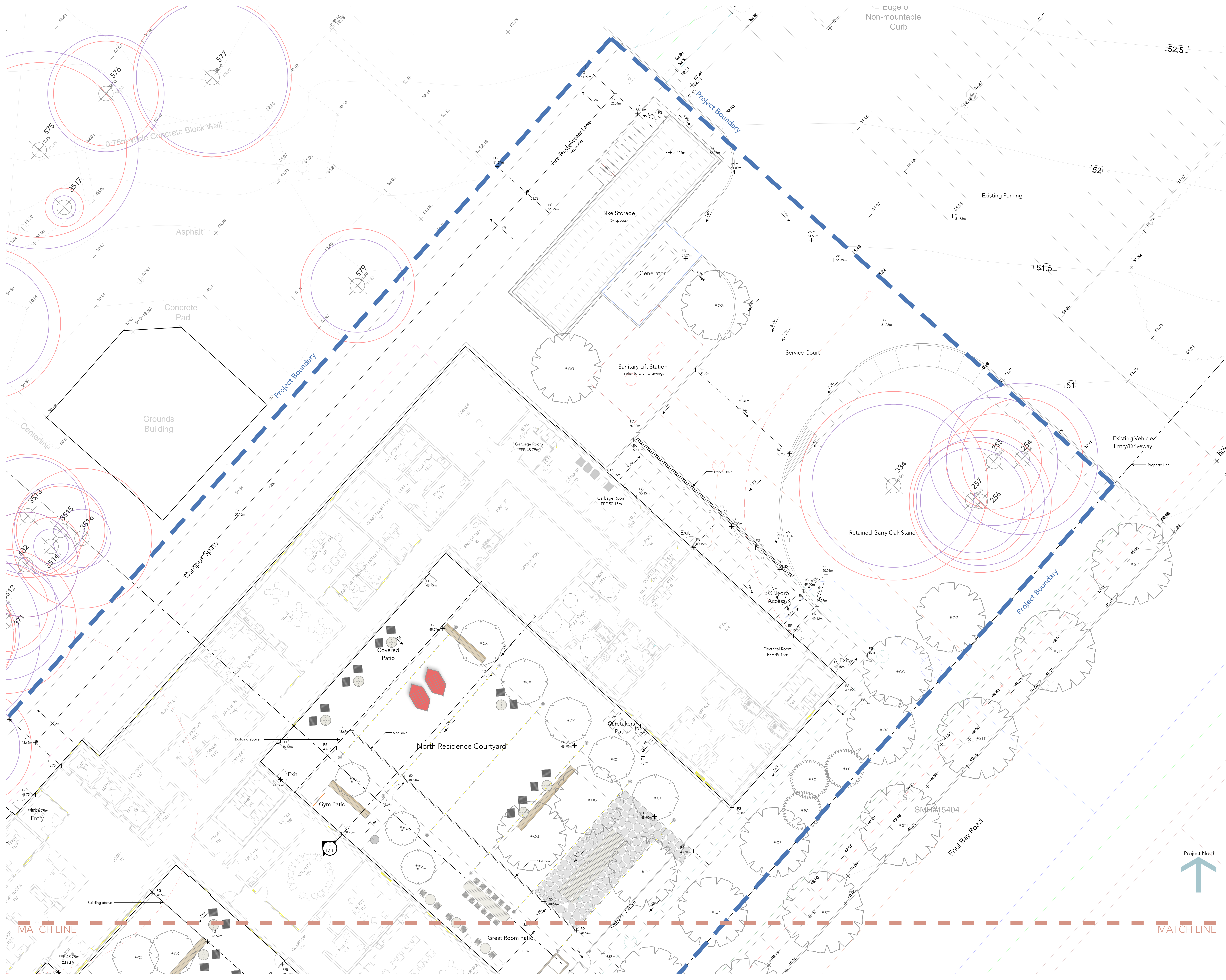
Project No. 25-01      Drawn js  
Scale 1:100            Reviewed js

Drawing Title  
**Landscape Grading Plan  
- South**

Sheet No.

**L2.1**





no.	date	item
3	2025.08.22	reissued for Rezoning
2	2025.07.23	issued for DD 50%
1	2025.05.09	issued for SD
-	2025.05.01	issued for Rezoning

Revisions

Copyright Reserved  
This drawing is and shall remain the property of Groundswell Landscape Architecture Inc. and shall retain the copyright therein. This document shall not be used for additions or alterations to the project or for the purpose of any other project without the prior written consent of Groundswell Landscape Architecture Inc.

Project

Camosun College  
Student Residences  
Oak Bay BC

Project No. 25-01      Drawn js  
Scale 1:100            Reviewed js

Drawing Title

Landscape Grading Plan  
- North

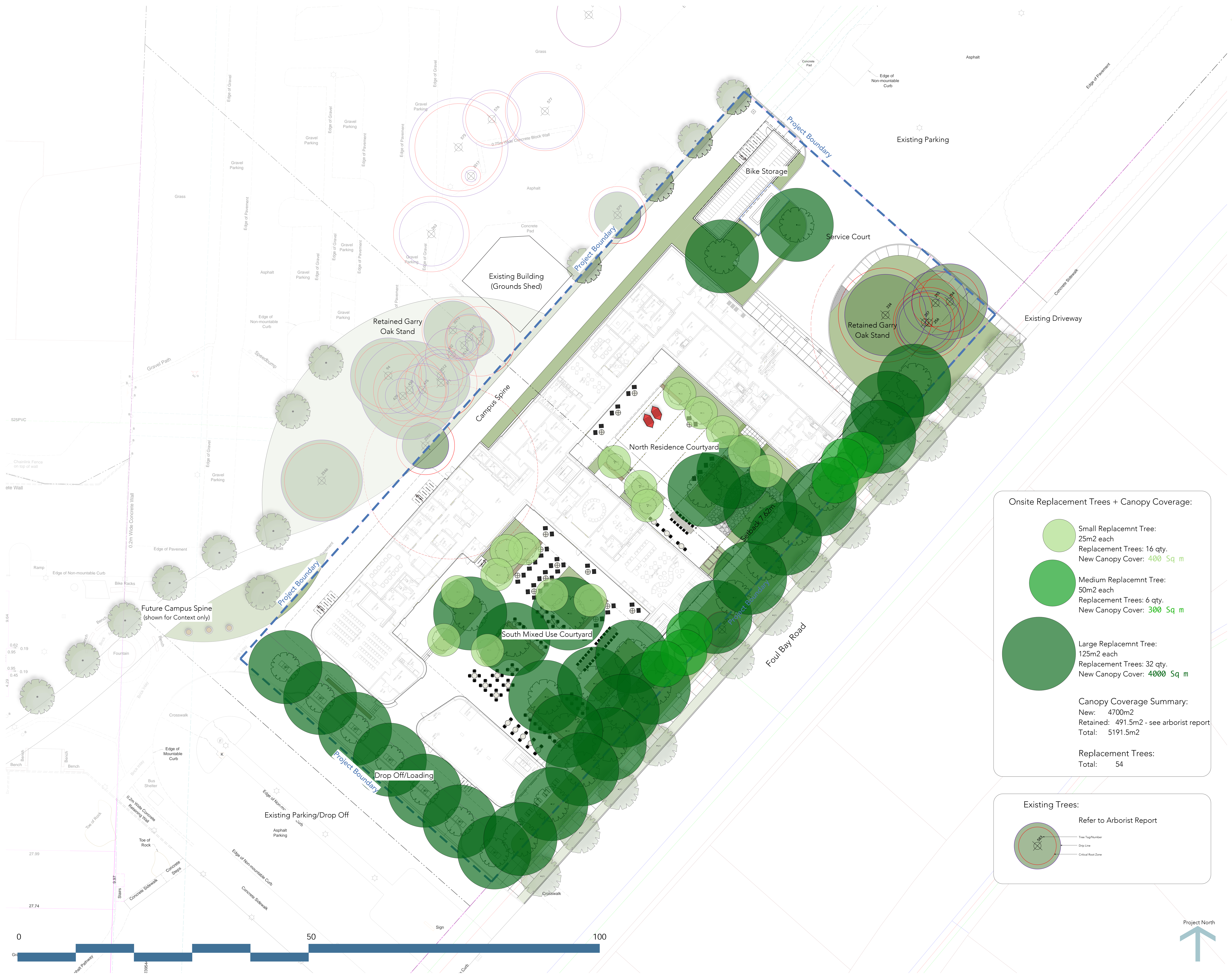
Sheet No.

L2.2



MATCH LINE

MATCH LINE



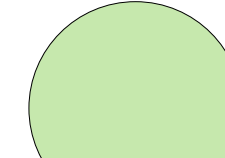

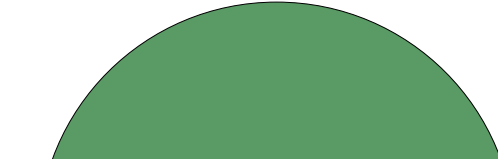
Seal

3 2025.08.22 reissued for Rezoning  
2 2025.07.23 issued for DD 50%  
1 2025.05.09 issued for SD  
- 2025.05.01 issued for Rezoning

no. date item

Revisions

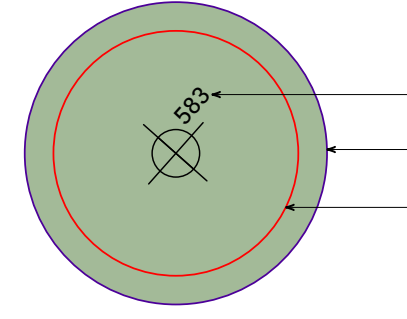
**Onsite Replacement Trees + Canopy Coverage:**

-  **Small Replacemnt Tree:**  
25m<sup>2</sup> each  
Replacement Trees: 16 qty.  
New Canopy Cover: **400 Sq m**
-  **Medium Replacemnt Tree:**  
50m<sup>2</sup> each  
Replacement Trees: 6 qty.  
New Canopy Cover: **300 Sq m**
-  **Large Replacemnt Tree:**  
125m<sup>2</sup> each  
Replacement Trees: 32 qty.  
New Canopy Cover: **4000 Sq m**

**Canopy Coverage Summary:**  
New: 4700m<sup>2</sup>  
Retained: 491.5m<sup>2</sup> - see arborist report  
Total: 5191.5m<sup>2</sup>

**Replacement Trees:**  
Total: 54

**Existing Trees:**  
Refer to Arborist Report



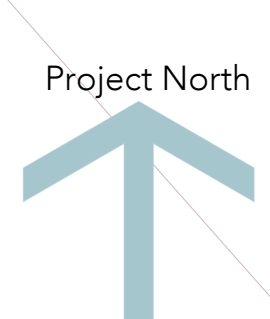
Copyright Reserved  
This drawing is and shall remain the property of Groundswell Landscape Architecture Inc. and shall retain the copyright therein. This document shall not be used for additions or alterations to the project or for the purpose of any other project without the prior written consent of Groundswell Landscape Architecture Inc.

Project  
**Camosun College  
Student Residences  
Oak Bay BC**

Project No. 25-01 Drawn js  
Scale 1:200 Reviewed js

Drawing Title  
**Landscape Plan  
- Canopy Count**

Sheet No.



**L3.0**

Seal



no.	date	item
3	2025.08.22	reissued for Rezoning
2	2025.07.23	issued for DD 50%
1	2025.05.09	issued for SD
-	2025.05.01	issued for Rezoning

Revisions

Copyright Reserved  
This drawing is and shall remain the property of Groundswell Landscape Architecture Inc. and shall retain the copyright therein. This document shall not be used for additions or alterations to the project or for the purpose of any other project without the prior written consent of Groundswell Landscape Architecture Inc.

Project

Camosun College  
Student Residences  
Oak Bay BC

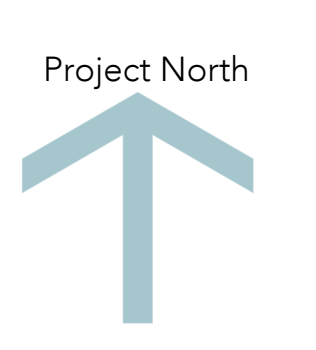
Project No. 25-01 Drawn js  
Scale 1:100 Reviewed js

Drawing Title

Landscape Plan  
- South Planting

Sheet No.

L3.1



no.	date	item
3	2025.08.22	reissued for Rezoning
2	2025.07.23	issued for DD 50%
1	2025.05.09	issued for SD
-	2025.05.01	issued for Rezoning

Revisions

Copyright Reserved  
This drawing is and shall remain the property of Groundswell Landscape Architecture Inc. and shall retain the copyright therein. This document shall not be used for additions or alterations to the project or for the purpose of any other project without the prior written consent of Groundswell Landscape Architecture Inc.

Project

**Camosun College  
Student Residences  
Oak Bay BC**

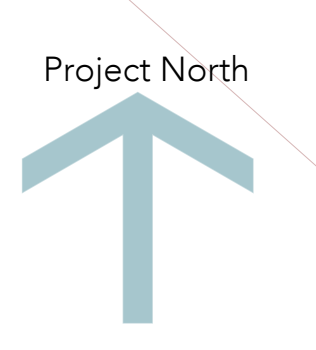
Project No. 25-01      Drawn js  
Scale 1:100            Reviewed js

Drawing Title

**Landscape Plan  
- North Planting**

Sheet No.

**L3.2**



MATCH LINE

MATCH LINE

Seal



**A** Section A - Through North Side of Building/Campus Spine  
L - 1.1 Scale 1:50



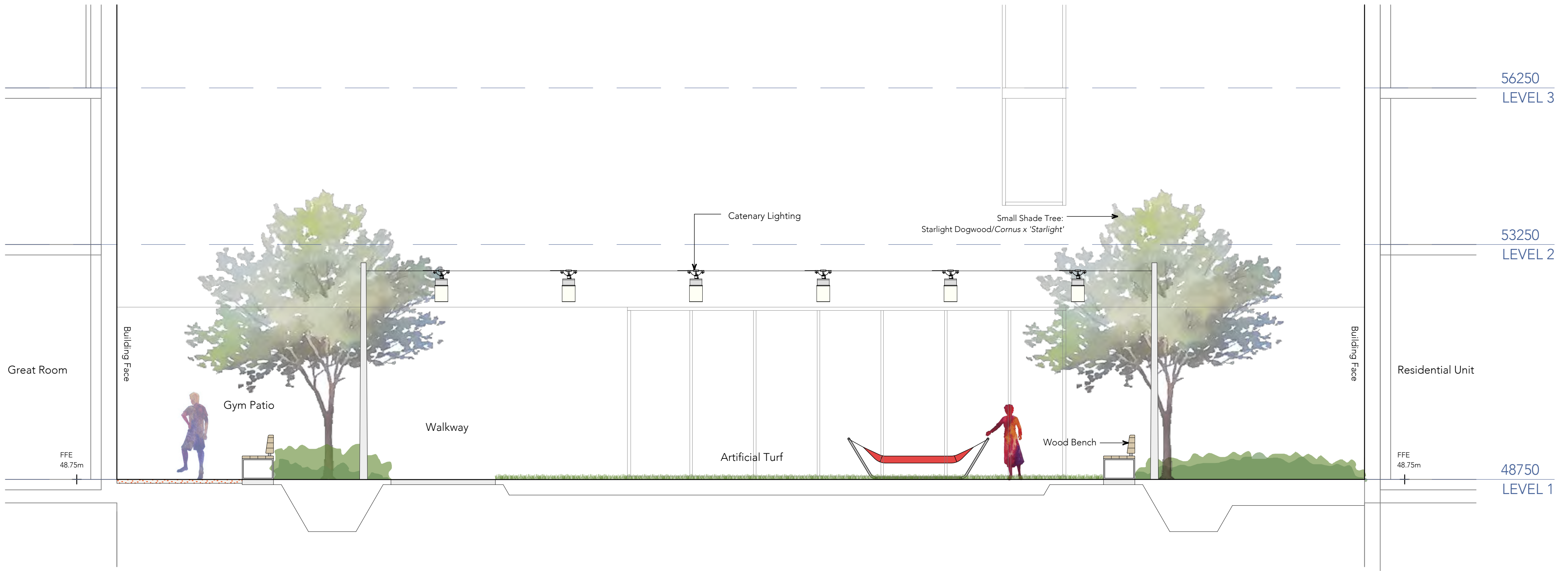
**B** Section B - Through North West of Building/Existing Drop Off  
L - 1.1 Scale 1:50



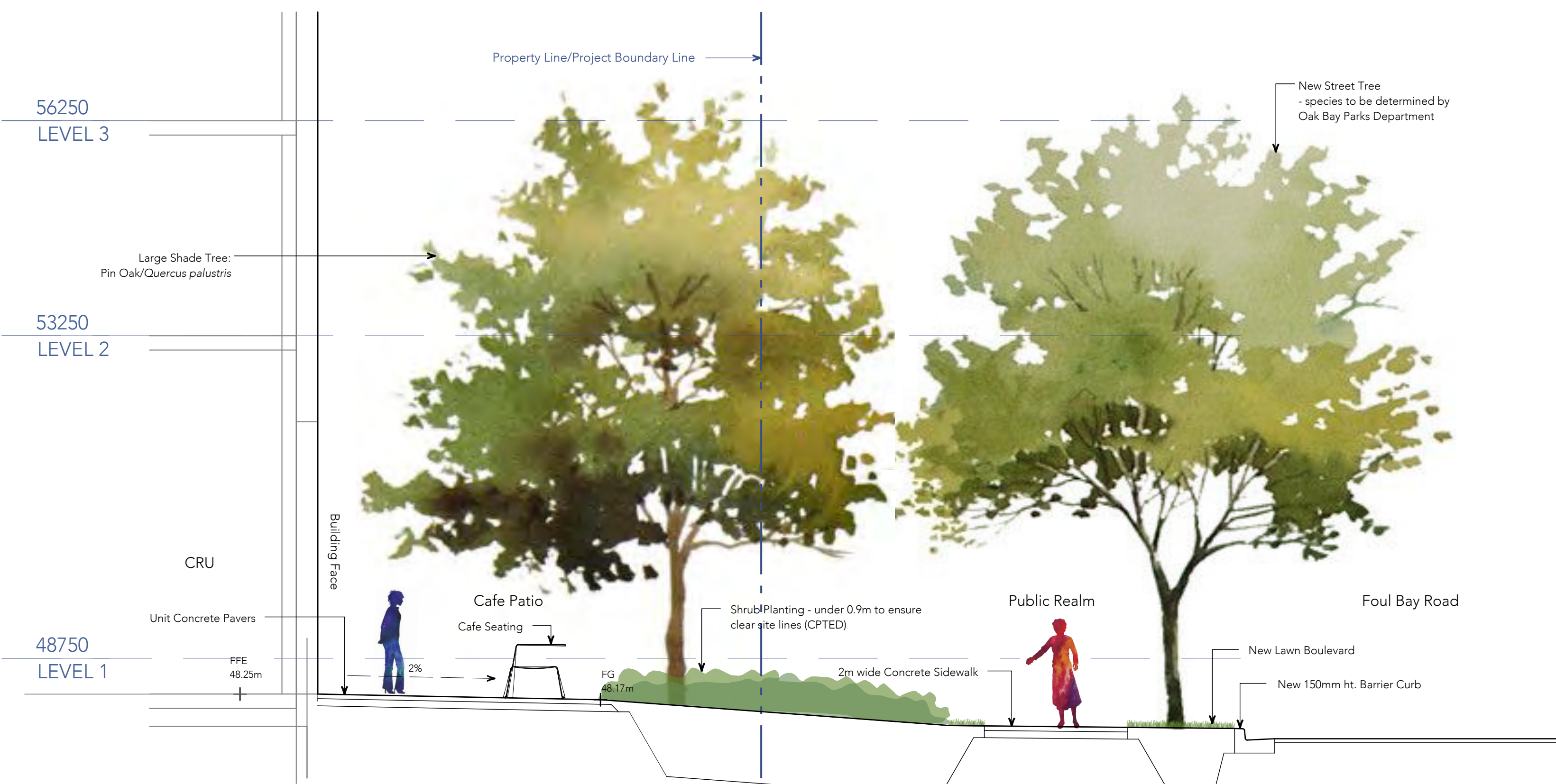
**C** Section C - Through South Side of Building/Drop Off  
L - 1.1 Scale 1:50



**D** Section D - Through South Mixed Use Courtyard  
L - 1.1 Scale 1:50



**E** Section E - Through North Residence Courtyard  
L - 1.2 Scale 1:50



**F** Section F - Through East Property Line/Foul Bay Road  
L - 1.1 Scale 1:50

no.	date	item
3	2025.08.22	reissued for Rezoning
2	2025.07.23	issued for DD 50%
1	2025.05.09	issued for SD
-	2025.05.01	issued for Rezoning

Revisions

Copyright Reserved  
This drawing is and shall remain the property of Groundswell Landscape Architecture Inc. and shall retain the copyright therein. This document shall not be used for additions or alterations to the project or for the purpose of any other project without the prior written consent of Groundswell Landscape Architecture Inc.

Project

Camosun College  
Student Residences  
Oak Bay BC

Project No. 25-01 Drawn js  
Scale 1:50 Reviewed js

Drawing Title

Landscape Sections

Sheet No.